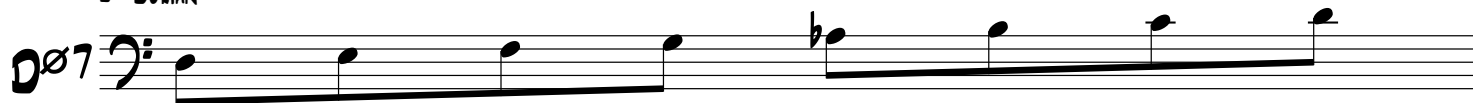


HARMONIC MAJOR MODES

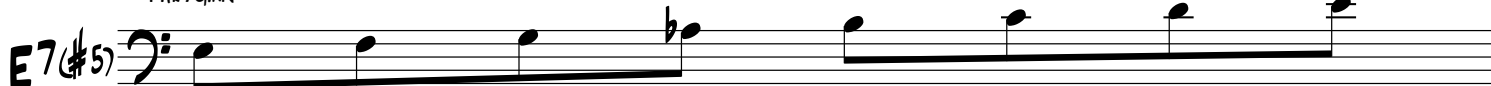
C Δ 7(b13) HARMONIC MAJOR



2 DORIAN b^5



3 PHRYGIAN b^4



F $_{-}$ (maj7) 4 LYDIAN b^3



5 MIXOLYDIAN b^9



A \flat Δ 7(\sharp 5) 6 LYDIAN AUGMENTED \sharp 2



7 LOCRIAN b^b7

